

Coalition for Supportive Care of Kidney Patients



Annual Report 2025



Pictured from left to right:

Samantha Gelfand, MD, Susan Wong, MD, Jen Scherer, MD, Dan Lam, MD and Christine Corbett, DNP

Message from the Executive Director

In 2025, the Coalition has moved from "invigorating our foundation" to "building the vision." Expanding on the core elements we established in 2024, including our resource-rich website and communications channels, we have spent the past twelve months operationalizing the insights gathered during our listening tours. We published new research on shared decision-making, shared new tools including a Kidney Disease Education packet, advocated for updated policies in kidney supportive care at the national level, and established new educational opportunities for future kidney supportive care champions. In the summer of 2025, we began a yearlong collaboration with a large, national dialysis organization to train their team members on the essential skills of kidney supportive care: active listening, motivational interviewing, trauma-informed care, and shared decision-making.

We have worked with incredible patient advocates, subject matter experts, non-profits and advocacy groups through 2025. As we look ahead to 2026 and beyond, there is a sense of momentum. We will be exploring ways to harness the enthusiasm in the nephrology world for supportive care to scale our work through deep connections among our network's members.

Our commitment remains steadfast: ensuring that every patient with kidney disease, regardless of geography or socioeconomic status, has access to high-quality kidney supportive care.

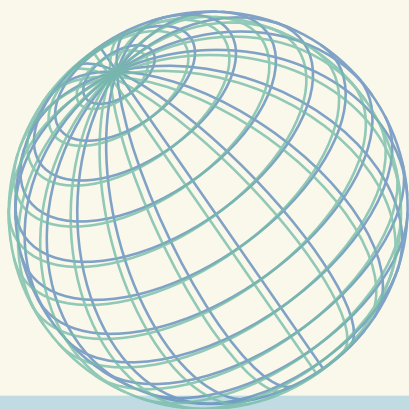
Christy Corbett

Digital Expansion & Global Engagement

In the first year of our digital revamp, we saw a surge in engagement. Our mission to be a central hub for kidney supportive care resources is **gaining momentum**.

We welcomed over 4,000 new users to our **new website**, representing 39 countries.

We scaled our **LinkedIn** to nearly 1,000 followers (71% increase over 2024) and over 850 connections.



With the launch of the **Global Kidney Supportive Care Directory**, the Coalition established a vital starting point for connecting patients and clinicians with supportive care practices worldwide.

Interviews with **patient advocates** and **clinical champions** of kidney supportive care have helped us highlight the importance and value of the field.

A Strong Foundation Leads to New Heights

How prevention strategies can allow patients with kidney disease to thrive

🕒 April 30, 2025

Celina Medina has been managing her kidney disease since she was two years old. So, years later, when she noticed some redness and tenderness around her dialysis catheter's exit site, she knew something was wrong.

Initially, her physician dismissed the concern. They told her she likely snagged the catheter's tubing and protective cap on something. With a little time, they said, it should resolve.

Within 36 hours, Ms. Medina was being rushed to the emergency room by her family. She was diagnosed with a life-threatening bloodstream infection that was not responding to first-line antibiotic therapy.



Celina Medina, Housing Specialist and Patient Advocate



The **Canopy of Care** podcast bridges the gap between clinical data and patient stories. Building on the success of our initial episodes, we are already preparing a robust slate of content for 2026. The Coalition has also appeared on the National Kidney Foundation's **Kidney Commute** and **Hot Topics in Kidney Health** podcasts.

Education & Resource Development

Library Enhancements

Our Supportive Care Library has seen significant growth this year, ensuring that evidence-based resources are just a click away.

Shared Decision-Making in Patients with Kidney Disease



Getting on the Same Page

In a 2018 study by [Ramer et al.](#), patients with advanced chronic kidney disease were asked to rank their health outcome priorities. Nephrologists were asked to do the same ranking based on what they believed their patients would want. **The clinicians were incorrect about their patients' top health outcome priority 65% of the time.** Shared decision-making is critical to aligning clinicians and patients.

Shared Decision-Making in Kidney Supportive Care, our online course, includes tools and case studies for clinicians.

National Impact

Notably, our Kidney Supportive Care Skills Series, a live 4-part course taught by our subject matter experts, is now being taught to multiple clinical teams at a large, national dialysis organization.

This engagement not only scales our impact but has also generated a sustainable new revenue stream for the Coalition.



WHAT TREATMENT CHOICES ARE THERE FOR PEOPLE WHOSE KIDNEYS ARE NO LONGER WORKING WELL?

Choices include transplant and dialysis at home or in a center. Some people may not want dialysis. Another option is "conservative kidney care." We call it active medical care without dialysis.



WHAT IS ACTIVE MEDICAL CARE WITHOUT DIALYSIS?

It is medical care in the clinic, without dialysis. It is given by a team of doctors and nurses. The goal is to help kidneys last as long as they can. The team manages high blood pressure and swelling. They prescribe medicines to protect the bones and treat anemia.



WHY WOULD SOMEONE CHOOSE ACTIVE MEDICAL CARE?

Some people feel like dialysis leaves them feeling too tired or sick or takes too long. Active medical care gives freedom from a dialysis schedule. People can spend more time with family and friends. It aims to improve a person's quality of life. See the table on the back to compare options.

Resources like the patient-facing Kidney Disease Education handout, created as part of the ExPAND Project, are now available in our website.

Professional Training

We launched a tiered education and training program that is already seeing institutional adoption. Our introductory, online course on shared decision-making has already been taken by learners in 7 states, 4 countries, and 3 continents.

Kidney Supportive Care for the Nephrology Clinician

SESSION 1

The Why and What of Kidney Supportive Care

Christine Corbett, DNP, CNP, FNP-BC, CNN-NP, ACHPN, FNKF, FANNA
Liz Anderson, DSW, LCSW



The *Kidney Supportive Care Skills Series* helps clinicians enhance their patient and caregiver communication strategies.

Innovation in Research

Our prolific research arm continued to deliver high-impact scholarship.

Shaping Standards: Key Publications

Aziz, F., & Baliker, M. (2025). **Beyond Medicine: Patient-Physician Partnerships Built on Compassion, Communication, Shared Decision-Making, and Hope**. Clinical Journal of the American Society of Nephrology, 10-2215.

Corbett, C. M. (2025). **Kidney Supportive Care: The Essential Role of Nephrology Nurse Practitioners in Enhancing Patient Outcomes and Quality of Life**. Nephrology nursing journal: journal of the American Nephrology Nurses' Association, 52(1), 11-99.

Pintea, G. I., Aldous, A., Corbett, C. M., Ryan, M., Lupu, D. E., & Moss, A. H. (2025). **An Initiative to Improve Nephrology Clinician Confidence in Shared Decision-Making**. Kidney Medicine, 101209.

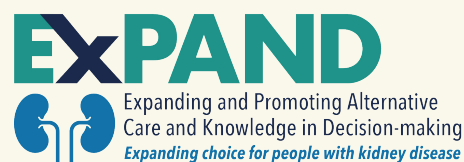
Moss, A. H., Corbett, C. M., Lupu, D. E. (2025). **Supportive Care for Patients Receiving Maintenance Hemodialysis: Why Nephrologists Should Care and What They Can Do**. American Journal of Kidney Diseases, 86(5), 579-581.

Wong, S. P. Y., Gaughran, O., Lee, D., Schell, J., Lam, D. Y., Paden, G., & Kross, E. K. (2025). **Conservative kidney Management (CKM) Jumpstart: Designing a Behavioral Nudge to Jumpstart Conversations about CKM between Patients and Nephrologists**. Kidney360.

Find more publications from the Coalition team at kidneysupportivecare.org

Implementing with ExPAND

As part of the Coalition's work with the 5-year **ExPAND Project***, we are supporting the implementation of Approach 2, also known as the ACTIVE program, at the study's sites across the United States. The ACTIVE Program helps clinics design, build and sustain a supportive care program for those patients who choose Active Medical Care, also known as Conservative Kidney Management, as their treatment option.



*The ExPAND Project is funded through a Patient-Centered Outcomes Research Institute® (PCORI®) Award (IHS-2022C2-27678).

Sharing Learnings

The Coalition team led conference sessions, presented posters, and shared at journal clubs around the globe in 2025, including:

ANNA National Symposium | American Academy of Hospice and Palliative Medicine Annual Conference | Supportive Care for the Renal Patient Conference (UK) | National Kidney Foundation Spring Clinical Meeting | Renal Physicians Association Annual Meeting | GWU School of Public Health Journal Club

Collaborations

The Coalition's success is built upon the strength of our connections to the kidney supportive care community. In 2025, we deepened our ties with clinical organizations, patient advocacy groups and policy-makers, including:

Center to Advance Palliative Care (CAPC). The Coalition contributed to CAPC and the National Kidney Foundation's joint publication, "The Case for Palliative Care in Kidney Care."

National Kidney Foundation (NKF). In addition to the NKF/CAPC publication, the Coalition supported NKF's Kidney Disease Outcomes Quality Initiative (KDOQI) Workgroup by collaborating with national experts in nephrology focused on elevating education. We also supported efforts to update NKF's biennial survey of nephrology clinicians, issued through the Council of Advanced Practice Providers (CAPP).

End-Stage Renal Disease (ESRD) Network. We spoke with ESRD Network patient advisors to compile a list of questions that patients can ask their clinical team when making decisions on their care pathway, including Active Medical Care without Dialysis, also known as Conservative Kidney Management (CKM).

American Nephrology Nurses Association (ANNA). In cooperation with ANNA, the Coalition surveyed nurses in nephrology to understand their experiences helping patients and their caregivers navigate kidney disease treatment options. We're also supporting ANNA's work to launch a micro-credential on Palliative and End of Life Care in Nephrology in 2026.

Coalition to Transform Advanced Care (CTAC). Alongside an esteemed group of experts on policy and clinical practice, the Coalition helped CTAC shape their advocacy priorities around the intersection of palliative care and kidney care, including concurrent hospice and dialysis support.

"Kidney supportive care merges palliative care into nephrology, emphasizing a holistic, patient-centered approach that honors each individual's values, wishes, and preferences while prioritizing symptom management and spiritual, psychosocial, and emotional support. We must ask the right questions and then listen to our patients."

Christine Corbett, DNP, CNN-NP, ACHPN
Assistant Research Professor, The George Washington University, and Executive Director, Coalition for Supportive Care of Kidney Patients

From "The Case for Palliative Care in Kidney Care".

American Society of Nephrology (ASN). The Coalition participated in the CKM Workgroup as part of ASN's Kidney Health Guidance program.

Centers for Medicare and Medicaid Services (CMS). The Coalition submitted support and recommendations for the Dialysis Facility Discussion of Patient Life Goals (D-PaLS) Patient-Reported Outcome Performance Measure (PRO-PM), which emphasizes advance care planning and shared decision-making.

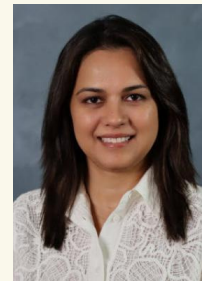
Executive Committee & Governance

We were thrilled to welcome three leaders to our Coalition's Executive Committee. Their wealth of expertise and experience will undoubtedly play a central role in helping the Coalition achieve its vision.



Mary Baliker. Drawing on 35 years of personal and professional experience with kidney disease, Mary is an accomplished healthcare consultant, author, and public health expert.

Jasjot Bhullar, MD. Board-certified in nephrology and palliative medicine, Dr. Bhullar serves in leadership roles for both the nephrology fellowship and therapeutic apheresis programs at Loma Linda University.



Josh Mannix, PhD. An expert researcher and administrator specializing in the intersection of kidney disease, drug access, and alternative treatments, Dr. Mannix leverages large datasets to develop evidence-based solutions aimed at improving healthcare outcomes for complex patient populations.

Recognitions & Transitions

Mary Baliker received recognition from the National Kidney Foundation, the United Network for Organ Sharing, and Ardelyx for her impactful advocacy work.

Dr. Daniel Lam, Executive Committee Member, received the Distinguished Clinical Service from the American Society of Nephrology.

The Kidney Transplant Collaborative (KTC) held a special session to celebrate **Dr. Lou Diamond**, an early Executive Committee member for the Coalition and KTC President, for his extraordinary contributions to the field of nephrology.

Dr. Alvin "Woody" Moss, who has been serving as Executive Committee Chair and was one of the founders of the Coalition nearly 25 years ago, is stepping down from the chairship while remaining engaged with Coalition research and publication efforts. We are so grateful for Dr. Moss' extraordinary contributions and look forward to his continued mentorship as we seek a new Chair in 2026.

Looking Ahead: 2026 & Beyond

As we look toward the next year, our focus shifts towards standardizing excellent, value-based care for patients with kidney disease, deepening our connections with advocates around the globe, and sharing the extraordinary stories of patients and their support teams.

Value-Based Care

A major focus for 2026 will be exploring and defining the role of kidney supportive care within value-based care models, ensuring that high-quality, compassionate care is recognized as a cornerstone of healthcare value.

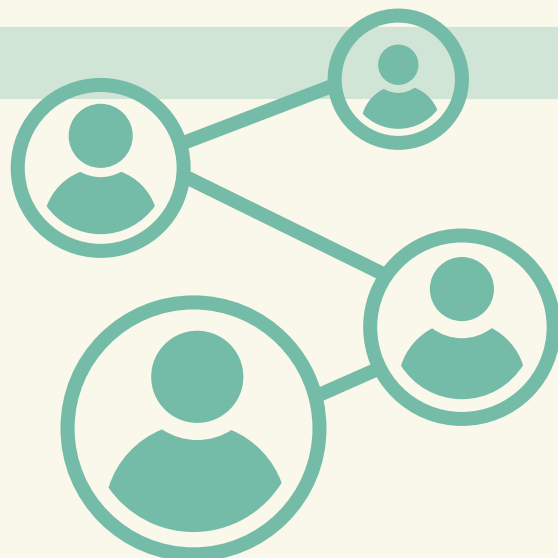


Robust Media

Look for an expanded podcast presence, new articles and more as we share the stories of those improving care for patients with kidney disease, including conversations with patient advocates.

Ambassadorships

We are looking for passionate individuals around the globe to join the Coalition as ambassadors of kidney supportive care. Contact us to learn more about this exciting new opportunity.[\[?\]](#)



How You Can Help

Sponsor

Help us fund the development of kidney supportive care implementation tools and research.

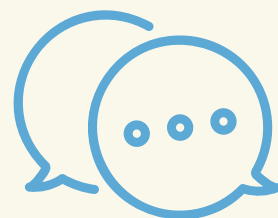


Collaborate

Join a working group to help refine our global standards or contribute to our growing library.

Connect

Amplify our mission on LinkedIn and through our newsletter.



Coalition for Supportive Care of Kidney Patients

kidneycoalition@gwu.edu
kidneysupportivecare.org



From left to right: Christine Corbett, DNP; Alvin "Woody" Moss, MD; Dale Lupu, PhD